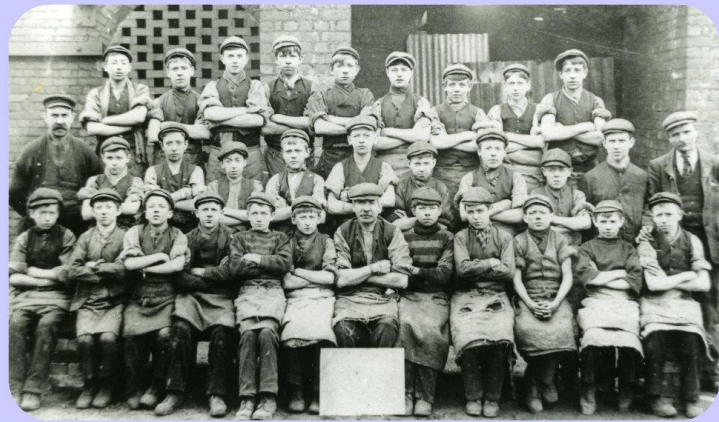


Kidwelly Industrial Museum



Pre visit Information



Contents

- a) Timetable for the day
- b) Details of visit
- c) Booking Details
- d) Safety Information

(a) TIMETABLE FOR THE DAY

- 1) Children arrive and sit in the DVD area.
- 2) The Tour Guide goes through the safety rules and details of the visit.
- 3) The Guide takes the children and teaching staff on a guided tour around the museum that includes involvement from the children.
- 4) At the end of the tour, the children remain in the Boxing Room and are divided into groups to complete worksheets, prepared by Gwdihoo Education/Addysg. Due to the practicalities of staffing, keeping the children in this one area of the museum facilitates easier supervision for staff/pupil ratio of care.
- 5) The children take part in a plenary session in the DVD area.
- 6) Children leave to return to school. (Running Time approx 90 minutes)



(b) The Visit



The Visit to Kidwelly Industrial Museum has been created to suit the needs of **KS2** pupils and is designed to link with the National Curriculum and Curriculum Cymreig wherever possible.

All sessions are led by a trained volunteer, checked by the Disclosure and Barring Service. (DBS).

It must be noted, however, that discipline remains the responsibility of the teacher.

The theme of the visit is a day in the life of Gareth Jones. The children will be told that this is the day before Gareth Jones' 11th birthday, as once he is 11 he will be allowed to start working full time at the Works as a Cold Roller.

The Visit to Kidwelly Industrial Museum is in 2 stages:



1) Guided Tour

The children learn of the different stages of producing tinfoil by following the journey of Gareth Jones in 1881 as he delivers food and drink to his family members who work at different areas within Kidwelly Tinfoil Works.

During the visit, the Museum Guide will choose 6 children from the school group to wear certain distinctive items of clothing to represent each family member.

As the Guide reaches each destination in the process of tinfoil production, he/she will bring each child who is dressed as a 'family' member to the front and will explain that particular job to the children, e.g. Gareth and Father will be standing with the Guide as he/she talks about hot rolling.

The use of narrative, interaction and hands-on activities, such as dressing-up will encourage children to be on their toes and therefore be mentally stimulated and personally involved.

2) Hands on Activities

Completion of worksheets by the children, under the supervision of the teachers, in the Boxing Room.



A **Teacher's Education Pack** is available offering supporting material for pre-visit preparation and classroom follow-up work in both Welsh and English. Please contact a member of the museum staff for a copy to be sent to you via email.

(c) Booking Details



Conducted school tours are available by arrangement. Although the visit is free for both children and teachers, a donation of £1.50 per child (to cover the cost of photocopying the worksheets) would be appreciated.

Morning Visits begin at 10.00am.
Afternoon session begin at 1.00pm.

Please arrive as promptly as possible.

Please inform us of any special requirements the children have (this includes children in wheelchairs, with walking difficulties and children with learning or behavioural difficulties.)

Contact Details

Kidwelly Industrial Museum
Broadford
Kidwelly
Carmarthenshire
SA17 4LW

Tel: 01554 891078 / 01267 228696

info@kidwellyindustrialmuseum.co.uk



Opening Times

Easter Opening times:

Tuesday 15th Thursday 17 to Tuesday 22nd Thursday 24th
and Saturday 26th

Summer opening Times:

May 3,4,5,24,25,26,27,29,31

Throughout June, July, August, September open every
Tuesday, Thursday, Saturday

(d) Safety Information



Kidwelly Industrial Museum has a School Safety Document and Access Statement available by request.

For details please refer to the following page on our website:

www.kidwellyindustrialmuseum.co.uk/aboutus.asp

and click the link to *Museum Access Statement*

Please ensure that you bring the required number of adults for the size of your group.

Please could you ensure that the children are forewarned that the Museum should be respected during their visit and that wilful damage will not be tolerated.

Risk Assessment

We suggest that the visiting school carries out its own risk assessment. Kidwelly Industrial Museum will be only too pleased to aid in the completion of this.

Feel free to contact us with any questions or to arrange a free preview visit.

We look forward to seeing you!

